

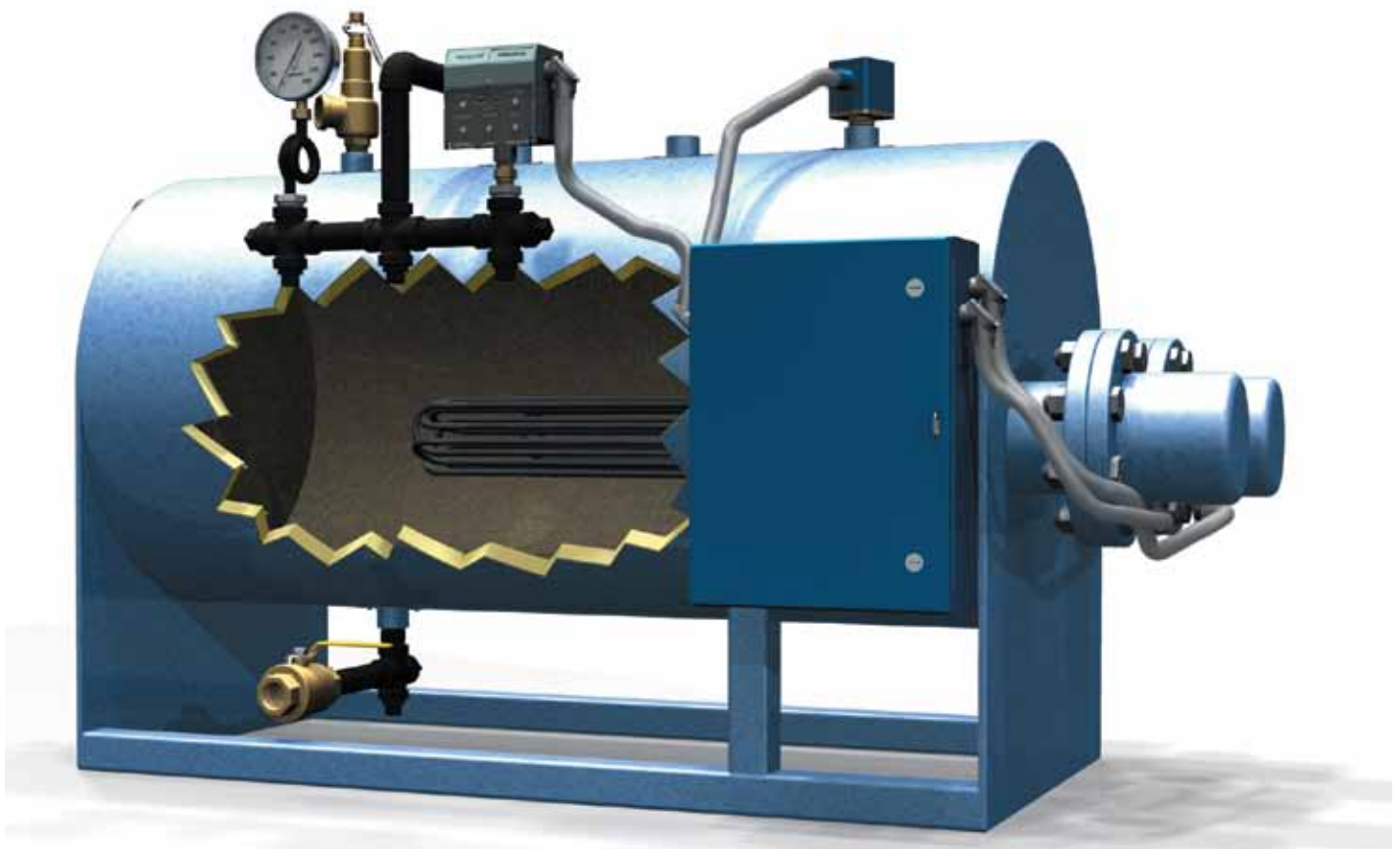


WILLIAMS & DAVIS BOILERS

Established 1921

Series 1000E

Electric Boilers w/ Incoloy Elements

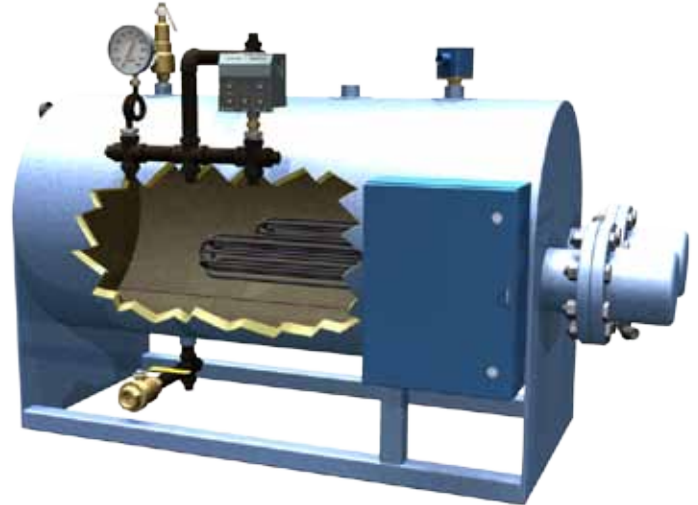


**SIZES .9HP THROUGH 59HP
FIRETUBE HOT WATER & PRESSURE STEAM BOILERS
PRESSURES OF UP TO 300 PSIG**

Quality Electric Boilers

A.S.M.E. Code and National Board Stamped

- Pressure: 15psi to 300psi.
- Hot Water or Steam.
- Only INCOLOY SHEATH ELEMENTS.
With 40 Watt Density/Sq. In. .475 Diameter.
- Insulation and Metal Jacket.
- Easy-Fast Cleanout thru Elements flange.
- Complete Package Ready for Electrical, Water and Steam Connections.
- Step Controllers Standard on Large Sizes.
- Maximum of 45 Amps per Step on all Voltages.
- All Electric Equipment and Controls are U.L. Approved.



(Available in vertical configuration)

BOILER SIZING RECOMMENDATIONS

Feed Correction

% return	Temp °F	Multiply required load by
0%	50°F	1.20
33%	100°F	1.15
67%	150°F	1.10
100%	200°F	1.05

Voltage Correction

Supply Voltage	Multiply required load by
200 V.	1.44
203 V.	1.33
210 V.	1.31
220 V.	1.19
230 V.	1.09
240 V.	1.00

Amps Correction

Supply Voltage	Multiply required load by
200 V.	0.833
208 V.	0.867
210 V.	0.875
220 V.	0.917
230 V.	0.958
240 V.	1.000

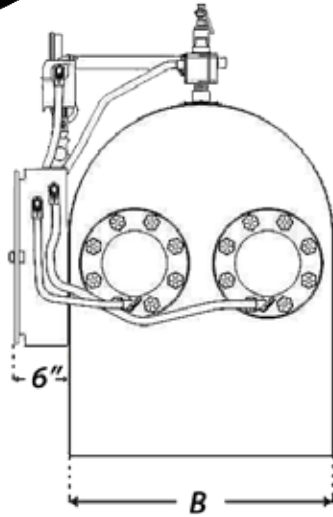
Example:

Size Boiler required = 2.2 HP
 Voltage = 220 V.
 Feedwater = 100° F 33% Return

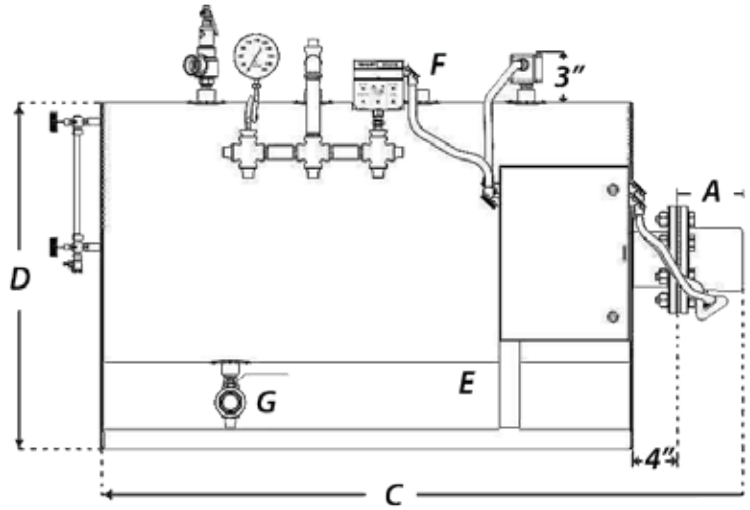
$2.2 \text{ HP} \times 1.19 \times 1.15 = 3.01$
 Specify the closest larger size. Order size 3.6



Specifications



FRONT

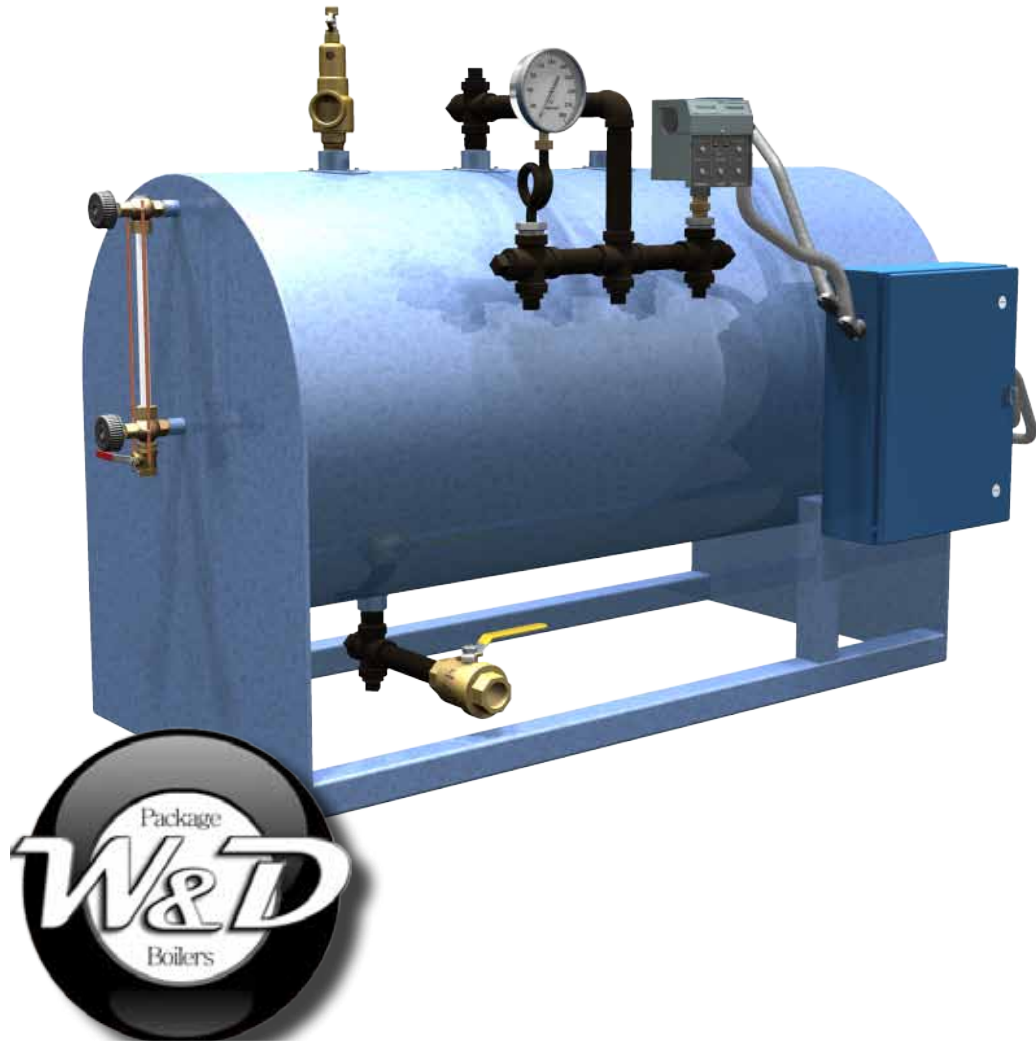


SIDE

SIZE	(H.P)	0.9	1.35	1.8	2.25	2.7	3.6	4.5	5.4	6.75	7.2	8.1	9	10.8	13.5	16.2	19.8	21.6	27	32.4	39.6	49.5	59.4
Electrical Rating	KW	9	13.5	18.0	22.5	27	36	45	54	67.5	72	81	90	108	135	162	19.8	216	288	324	396	495	594
Boiler Capacity (from & at 212°F)	lbs/hr	31	47	62	78	93	124	155	186	233	248	280	311	373	466	559	683	745	932	1118	1367	1708	2050
Gross Output	MBTU/hr	30	45	60	75	90	121	151	181	226	241	271	301	362	452	542	663	723	904	1085	1326	1657	1989
No. Steps 240V. single phase		1	2	2	3	3																	
No. Steps 240V. 3 phase		1	1	2	2	2	4	4	4	6	6	6	8	8	12	12	16	16	24				
No. Steps 480V. 3 phase		1	1	1	1	1	2	2	2	3	3	3	4	4	6	6	8	8	12	12	16	20	24
Total Amps 240V. single phase		37.5	56.3	75.0	93.8	113																	
Total Amps 240V. 3 phase		22	32.4	43.5	54	65	87	108	130	162	173	189	216	260	324	390	476	520	649	780			
Total Amps 480V. 3 phase		11	16.2	21.7	27	37.5	43.5	54	65	81	86.5	91.5	108	130	162	185	238	260	324	390	476	595	715
Number of Elements		1	1	1	1	1	2	2	2	3	4	3	4	4	6	3	2	8	6	6	4	5	6
Space to remove Element	(A)	in.	24	36	24	30	36	24	30	36	30	36	30	36	30	36	36	36	36	36	36	36	36
Over All Width	(B)	in.	14	14	18	18	18	22	22	22	26	26	26	32	32	32	32	32	32	32	32	38	38
Over All Length	(C)	in.	33	45	33	45	45	33	45	45	45	45	45	45	45	45	84	90	90	90	90	90	90
Over All Height	(D)	in.	18	18	22	22	22	26	26	26	3	30	30	36	36	36	36	36	36	36	36	42	42
Water Inlet Opening	(E)	in.	3/4	3/4	3/4	3/4	3/4	3/4	3/4	3/4	3/4	3/4	1	1	1	1	1	1	1	1	1	1	1
Steam Opening	(F)	in.	3/4	3/4	3/4	3/4	3/4	3/4	3/4	3/4	3/4	3/4	1	1	1	1	1	1	1	1 1/4	1 1/4	1 1/2	2
Blow-off Opening	(G)	in.	3/4	3/4	3/4	3/4	3/4	3/4	3/4	3/4	3/4	3/4	3/4	3/4	3/4	3/4	1.00	1.00	1.00	1.00	1.00	1.00	1 1/2
Safety Relief Valve Opening		in.	3/4	3/4	3/4	3/4	3/4	3/4	3/4	3/4	3/4	3/4	3/4	3/4	3/4	3/4	1	1	1	1	1	1	1
Approx. Shipping Wt.	Lbs.	300	350	360	450	460	500	530	540	600	650	750	850	900	1000	1050	1200	1400	1600	1800	1900	2400	2600

Specifications subject to change without notice. Please contact your local Williams & Davis Representative for more details.





Your Authorized Williams & Davis Representative

P.O. Box 539
2044 S. I-45
Hutchins, Texas 75141

(800) 8-BOILER
(800) 826-4531

(972) 225-2356
(972) 225-5739 FAX

www.wdboiler.com
info@wdboiler.com